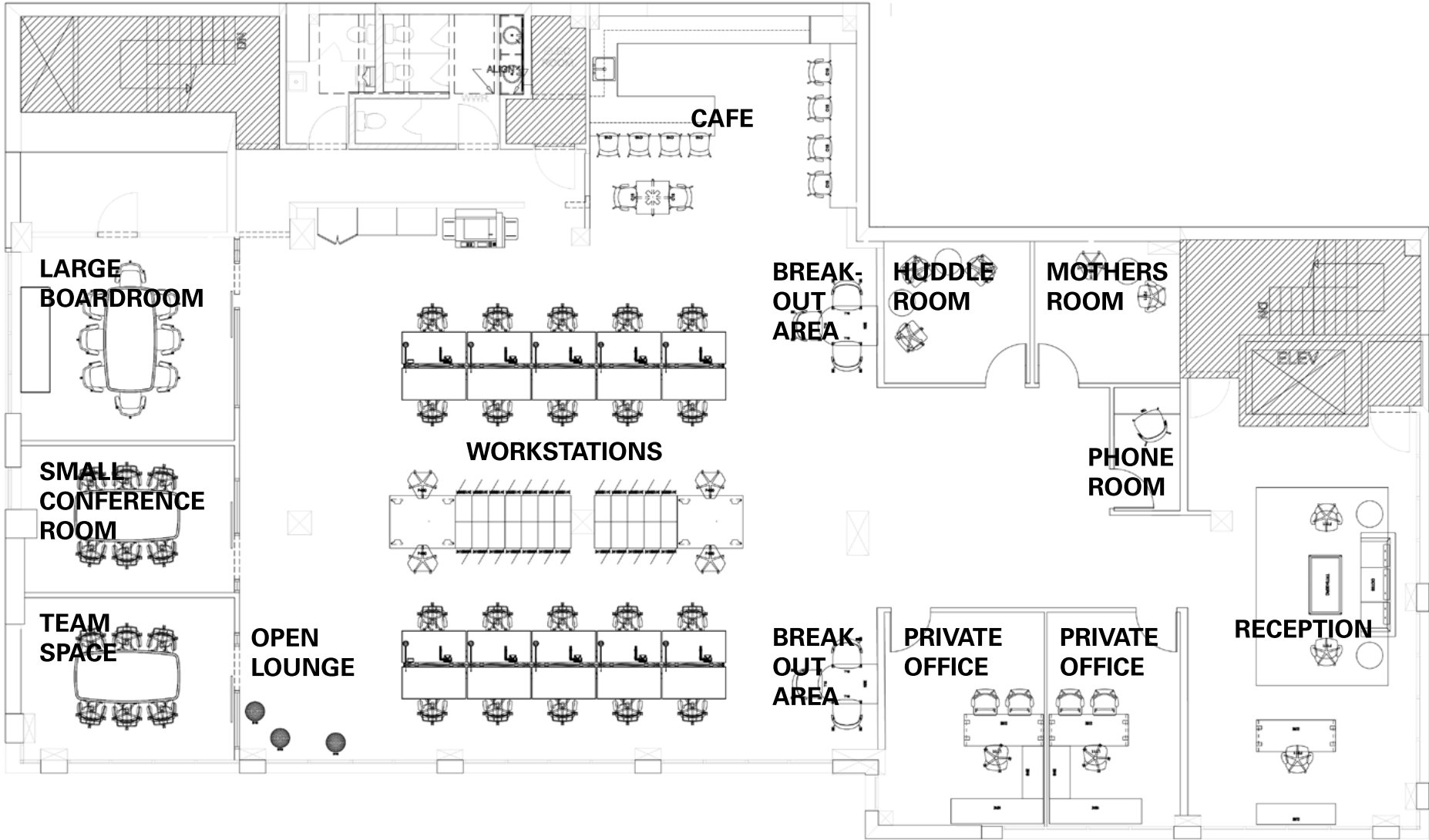


SELECT THE AREA TO LEARN MORE ABOUT OUR SEATING SOLUTIONS



Summa



SUMMA

Designed for today's most dynamic leaders, Summa is a versatile leather conference chair suitable for the corner office, the boardroom, as well as the home office. Its enveloping shape and sculpted materials converge for a truly harmonious design that exudes luxury in every detail. Completely customizable, Summa boasts a defined aesthetic and sophisticated palette that elevates a brand's presence within any environment. Featuring either a crafted wood-wrapped or crafted upholstered back, Summa is accompanied by Humanscale's chrome-free leather collection.



[Learn More](#) 

[Download Product Brochure](#)

Liberty



LIBERTY TASK

The Liberty Task chair is an intelligent mesh task chair engineered to provide automatic lumbar support for every user, as well offering simplicity and complete ease of use. Liberty was designed to offer a unique, minimal aesthetic and to provide custom comfort for every person who sits in it. Like Humanscale's Diffrient Smart and Diffrient World chairs, Liberty uses Humanscale's revolutionary Form-Sensing Mesh Technology and mechanism-free recline for perfect support and unprecedented comfort.



[Learn More](#) 

[Download Product Brochure](#)

Diffrient Smart



DIFFRENT SMART

The Diffrient Smart chair is an intelligent mesh task chair with a striking linear aesthetic that complements any environment. Engineered to provide automatic lumbar support for every user, as well as simplicity and ease of use, Diffrient Smart offers comfort, style and flexibility. Diffrient Smart was created by designer Niels Diffrient and, like Humanscale's Liberty and Diffrient World chairs, uses Humanscale's revolutionary Form-Sensing Mesh Technology and mechanism-free recline for perfect support for every user.



[Learn More](#) 

[Download Product Brochure](#)

Smart Ocean



SMART OCEAN

One of the most sustainable chairs in the world. Smart Ocean is the embodiment of our commitment to sustainable manufacturing and incorporates almost 2 pounds of recycled fishing net. Featuring the same Form-Sensing Mesh Technology and transparent functionality as the Diffrient Smart chair, Smart Ocean instantly adjusts to each unique user — as if each chair was made for them. With an aesthetic driven by functionality, Smart Ocean has a timeless beauty that's universally relevant in any workspace.



[Learn More](#) 

[Download Product Brochure](#)

Smart Occasional



SMART OCCASIONAL

Diffrient Occasional is a stackable multipurpose chair that is suitable for a variety of office and group settings. A strong, linear backrest made with proprietary non-stretch mesh creates a three-dimensional form — fitting the user like a perfectly tailored shirt. Diffrient Occasional responds to the sitter and adapts to the contours of the body. Featuring expertly welded joints that create a continuous frame, Occasional is suitable for any office or home environment. It can be configured to match our Diffrient Smart, Diffrient World or Liberty task chairs for a consistent and restrained look.



[Learn More](#) 

[Download Product Brochure](#)

Diffrient World



DIFFRIENT WORLD

Diffrient World is Humanscale's first foray into all-mesh task seating. Designer Niels Diffrient wanted to create the most minimal, full-function task chair ever made. With an innovative tri-panel mesh backrest that provides custom back and lumbar support and a lightweight design, Diffrient World is, like all of Humanscale's products, simple, beautiful and functional. The design eliminates the need for traditional mechanisms, instead using the laws of physics and the sitter's body weight to offer perfect recline for each individual sitter. Diffrient World offers the ultimate user-friendly sitting experience.



[Learn More](#) 

[Download Product Brochure](#)

Ballo



BALLO

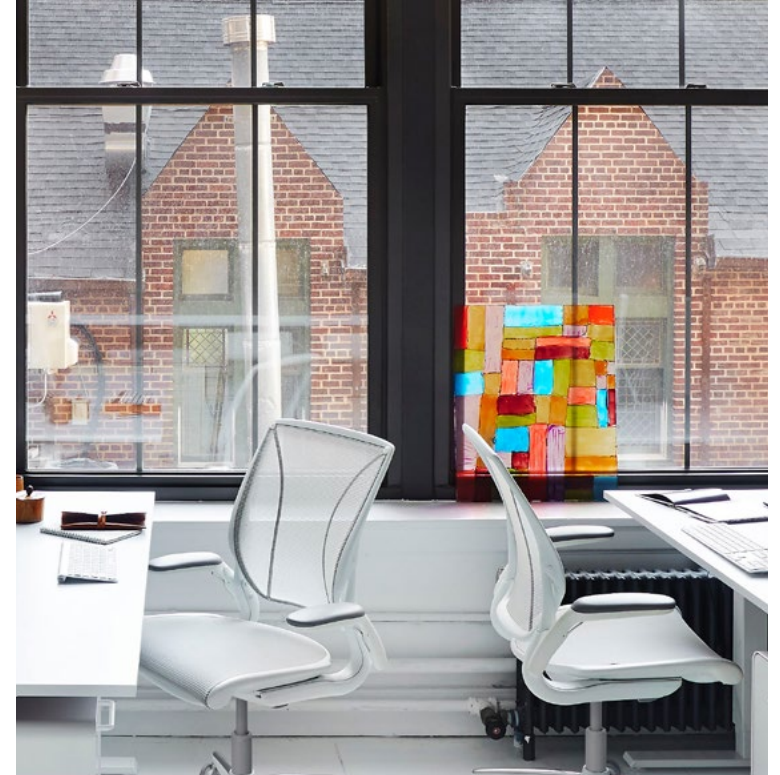
Ballo is designer Don Chadwick's vision of what a multipurpose stool should be—fun, engaging and perfect for short-term, active sitting in the home or office. With a compact central column and lightweight air-filled domes, Ballo is an imaginative take on traditional ball chairs, supporting flexibility and freedom of movement. Available in a variety of vibrant colors, Ballo has a dynamic nature that allows it to integrate into a wide range of environments.



[Learn More](#)

[Download Product Brochure](#)

Diffrient World



DIFFRIENT WORLD

Diffrient World is Humanscale's first foray into all-mesh task seating. Designer Niels Diffrient wanted to create the most minimal, full-function task chair ever made. With an innovative tri-panel mesh backrest that provides custom back and lumbar support and a lightweight design, Diffrient World is, like all of Humanscale's products, simple, beautiful and functional. The design eliminates the need for traditional mechanisms, instead using the laws of physics and the sitter's body weight to offer perfect recline for each individual sitter. Diffrient World offers the ultimate user-friendly sitting experience.



[Learn More](#)

[Download Product Brochure](#)

Saddle / Pony Stool



SADDLE / PONY STOOL

Part of Humanscale's award-winning Freedom seating line, the Saddle and Pony task stools are among the most comfortable, versatile and ergonomic stools ever made. The original Saddle and the compact Pony Saddle make sitting comfortable and workplace movement simple while complementing any workspace or home office. The triangular cushion of the Saddle and Pony saddle stools encourages users to sit in a "saddle" posture. Sitting on stools in this position lowers the thighs, opens up the hips and allows for increased circulation. The posture also reduces pressure points on the tailbone, enabling long-term comfort.



[Learn More](#)

[Download Product Brochure](#)

Cinto



CINTO

Style, comfort and utility come together in the Cinto chair, a stackable office chair that breaks the number one rule for stacking chairs: it's comfortable. Like Humanscale's ergonomic task chairs, Cinto was built to support the human body by minimizing pressure points and discomfort.



[Learn More](#)

[Download Product Brochure](#)

Liberty Side



LIBERTY SIDE

Featuring the same Form-Sensing Mesh backrest as the Liberty Task chair, Niels Diffrient's Liberty Side provides custom ergonomic support for each user, while showcasing minimalist charm. Lightweight, recyclable and long-lasting components also make this chair as eco-friendly as it is stylish.



[Learn More](#)

[Download Product Brochure](#)

Trea



TREA

The Red Dot-Award winning Trea teams a timeless, clean aesthetic with high-performance function. Created in collaboration with visionary designer Todd Bracher, Trea offers intuitive comfort by mimicking the instinctive recline of the human body and embracing the sitter in a supportive shell.



[Learn More](#)

[Download Product Brochure](#)

Liberty Task



LIBERTY TASK

The Liberty Task chair is an intelligent mesh task chair engineered to provide automatic lumbar support for every user, as well offering simplicity and complete ease of use. Liberty was designed to offer a unique, minimal aesthetic and to provide custom comfort for every person who sits in it. Like Humanscale's Diffrient Smart and Diffrient World chairs, Liberty uses Humanscale's revolutionary Form-Sensing Mesh Technology and mechanism-free recline for perfect support and unprecedented comfort.



[Learn More](#)

[Download Product Brochure](#)

Liberty Ocean



Image Courtesy of Room & Board



LIBERTY OCEAN

Liberty Ocean is our latest product to build on Humanscale's commitment to sustainable manufacturing with nearly 2 pounds of recycled fishing net in each chair. Liberty Ocean adheres to our design philosophies, featuring seamless functionality that allows the chair to instantly adjust to each unique user in every position, without the need for knobs, locks, or levers.



[Learn More](#)

[Download Product Brochure](#)

Liberty Occasional



LIBERTY OCCASIONAL

Diffrient Occasional is a stackable multipurpose chair that is suitable for a variety of office and group settings. A strong, linear backrest made with proprietary non-stretch mesh creates a three-dimensional form — fitting the user like a perfectly tailored shirt.

Diffrient Occasional responds to the sitter and adapts to the contours of the body. Featuring expertly welded joints that create a continuous frame, Occasional is suitable for any office or home environment. It can be configured to match our Diffrient Smart, Diffrient World or Liberty task chairs for a consistent and restrained look.



[Learn More](#)

[Download Product Brochure](#)

Summa



SUMMA

Designed for today's most dynamic leaders, Summa is a versatile leather conference chair suitable for the corner office, the boardroom, as well as the home office. Its enveloping shape and sculpted materials converge for a truly harmonious design that exudes luxury in every detail. Completely customizable, Summa boasts a defined aesthetic and sophisticated palette that elevates a brand's presence within any environment. Featuring either a crafted wood-wrapped or crafted upholstered back, Summa is accompanied by Humanscale's chrome-free leather collection.



[Learn More](#) 

[Download Product Brochure](#)

Path



PATH

Path is an evolution of our commitment to sustainability: with each new product, Humanscale sets a higher standard for and finds ways to embed sustainability into our designs. Path upcycles more plastic waste than any other chair in the industry. Like all Humanscale chairs, it is produced to reduce our impact on the climate. While Path is new, it is our 26th net positive product, which is more than any other company has. Humanscale was the first to take this approach and we remain the only manufacturer in our industry to have products that are certified climate positive



[Learn More](#)

[Download Product Brochure](#)



Path



Image Courtesy of Room & Board

PATH

Path is an evolution of our commitment to sustainability: with each new product, Humanscale sets a higher standard for and finds ways to embed sustainability into our designs. Path upcycles more plastic waste than any other chair in the industry. Like all Humanscale chairs, it is produced to reduce our impact on the climate. While Path is new, it is our 26th net positive product, which is more than any other company has. Humanscale was the first to take this approach and we remain the only manufacturer in our industry to have products that are certified climate positive



[Learn More](#)

[Download Product Brochure](#)

Freedom Headrest



FREEDOM HEADREST

Described by The New York Times as “the gold standard in office seating,” the Freedom chair redefines the concept of traditional task chairs. Designer Niels Diffrient aimed to design an office chair that automatically adapts to the user, allowing them to move freely from posture to posture. Diffrient’s unique approach removed complexities found in other chairs, such as cumbersome recline levers and back tension dials for a truly ergonomic task chair. As a result, he developed a recline mechanism that perfectly adjusts to the user, definitively reinventing modern task seating to be truly simple, functional and beautiful.



[Learn More](#) 

[Download Product Brochure](#)

Saddle / Pony Stool



SADDLE / PONY STOOL

Part of Humanscale's award-winning Freedom seating line, the Saddle and Pony task stools are among the most comfortable, versatile and ergonomic stools ever made. The original Saddle and the compact Pony Saddle make sitting comfortable and workplace movement simple while complementing any workspace or home office. The triangular cushion of the Saddle and Pony saddle stools encourages users to sit in a "saddle" posture. Sitting on stools in this position lowers the thighs, opens up the hips and allows for increased circulation. The posture also reduces pressure points on the tailbone, enabling long-term comfort.



[Learn More](#)

[Download Product Brochure](#)

Trea



TREA

The Red Dot-Award winning Trea teams a timeless, clean aesthetic with high-performance function. Created in collaboration with visionary designer Todd Bracher, Trea offers intuitive comfort by mimicking the instinctive recline of the human body and embracing the sitter in a supportive shell.



[Learn More](#)

[Download Product Brochure](#)

Freedom Headrest



FREEDOM HEADREST

Described by The New York Times as “the gold standard in office seating,” the Freedom chair redefines the concept of traditional task chairs. Designer Niels Diffrient aimed to design an office chair that automatically adapts to the user, allowing them to move freely from posture to posture. Diffrient’s unique approach removed complexities found in other chairs, such as cumbersome recline levers and back tension dials for a truly ergonomic task chair. As a result, he developed a recline mechanism that perfectly adjusts to the user, definitively reinventing modern task seating to be truly simple, functional and beautiful.



[Learn More](#)

[Download Product Brochure](#)

Trea



TREA

The Red Dot-Award winning Trea teams a timeless, clean aesthetic with high-performance function. Created in collaboration with visionary designer Todd Bracher, Trea offers intuitive comfort by mimicking the instinctive recline of the human body and embracing the sitter in a supportive shell.



[Learn More](#)

[Download Product Brochure](#)